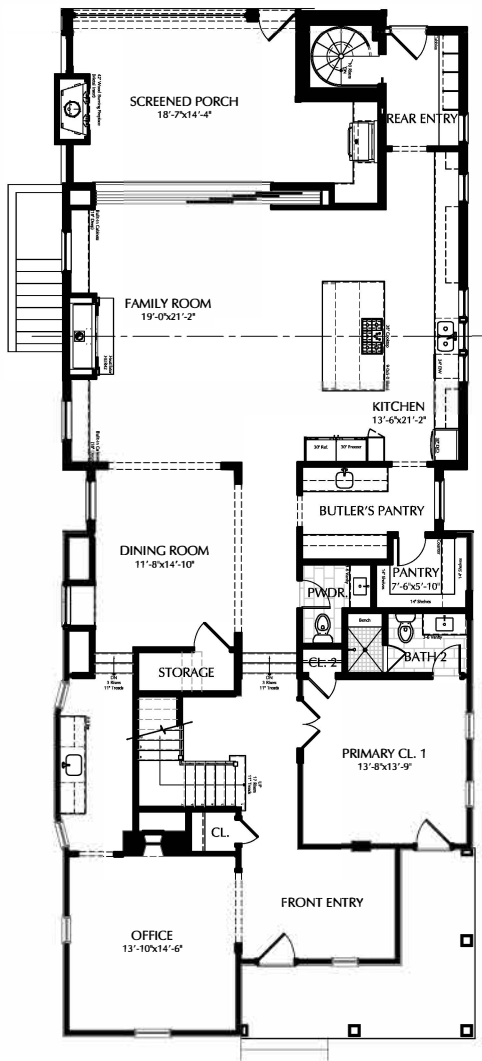
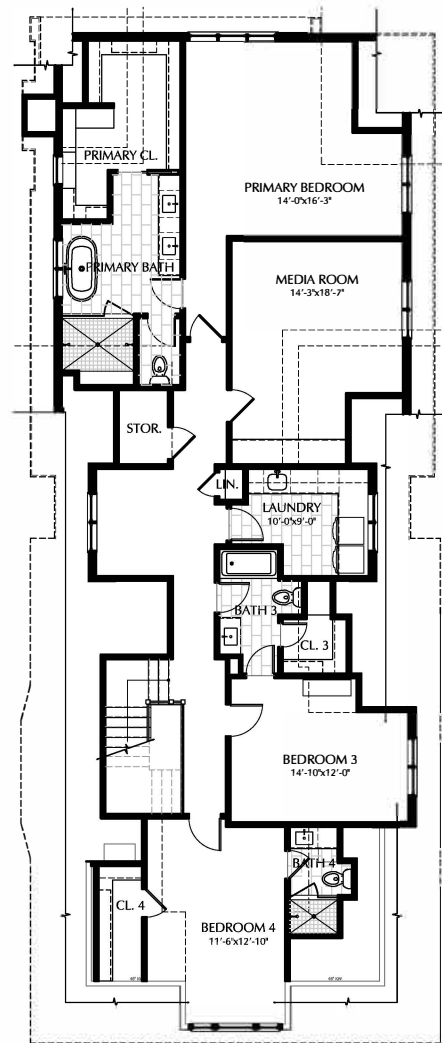


GARAGE FLOOR PLAN



FIRST FLOOR PLAN



SECOND FLOOR PLAN

# 1006 HALCYON AVENUE

Basement	889 SqFt
Main Floor	2,434 SqFt
Second Floor	1,885 SqFt
<b>TOTAL</b>	<b>5,208 SqFt</b>



These plans are for representational purposes only. Room dimensions and square footages are approximate. Final finished square footage calculations may vary from the finished square footage of the house as constructed.